



## SSD2845-E V3

### 28" Resizing LCD, 1000 nits LED backlight, 1920x357 ultra wide aspect ratio 16:3

SSD2845 V3 is an innovative ultra-wide, sunlight readable, LED backlight LCD display. It provides LCD panel with specific ratios for digital signage, public transportation, exhibition hall, department store, vending machine and industrial applications. Incorporating with A.D. control board and backlight design, it is high brightness and sunlight readable panel, can display high-quality video with energy-efficient.

#### Key Features

- Resizing LCD
- Ultra Wide Screen (16 : 3)
- Sunlight Readable
- LED Backlight
- High Brightness 1000 nits
- Low Power Consumption
- Wide Dimming
- Life Expectancy (70,000hrs)
- Wide Viewing Angle



### Specifications

V1

<b>Model No.</b>	<b>SSD2845-E V3</b>
<b>Description</b>	28" Resizing LCD, 1000 nits LED backlight, 1920x357
<b>Display Area</b>	698.4 x 129.8 mm
<b>Brightness</b>	1000 cd/m <sup>2</sup>
<b>Resolution</b>	1920 x 357
<b>Aspect Ratio</b>	16 : 3
<b>Contrast Ratio</b>	6500:1
<b>Pixel Pitch (mm)</b>	0.3637 x 0.3637
<b>Pixel Per Inch (PPI)</b>	69.7
<b>Viewing Angle</b>	178°(H), 178°(V)
<b>Display Colors</b>	16.7M
<b>Response Time (Typical)</b>	6.5 ms
<b>Sync</b>	LVDS
<b>Power Consumption</b>	35W
<b>Dimensions (mm)</b>	745.6 x 183.3 x 57.5
<b>Weight (Net)</b>	5.6Kg
<b>LED Driving Board</b>	<b>LID28A</b>
<b>Control Board (Optional)</b>	<b>AD2662GD / AD2662GDVAR</b>
<input type="checkbox"/> AD2662GD	VGA + DVI
<input type="checkbox"/> AD2662GDVAR	VGA + DVI (Optional AV/ S-Video / Component / Audio)
<input type="checkbox"/> Others	
<b>F / R Control Button</b>	5 Key / 4 Key
<input type="checkbox"/> 4 Key	Power Switch, Menu, Select (+,-),
<input type="checkbox"/> 5 Key	Power Switch, Menu, Select (+,-),Auto
<b>OSD Menu</b>	Brightness, Contrast, H/V Position, Color, Phase, Clock...
<b>Optional</b>	<input type="checkbox"/> Touch Screen

Specifications are subject to change without notice.

All brands or product names are trademarks or registered trademarks of their respective companies.

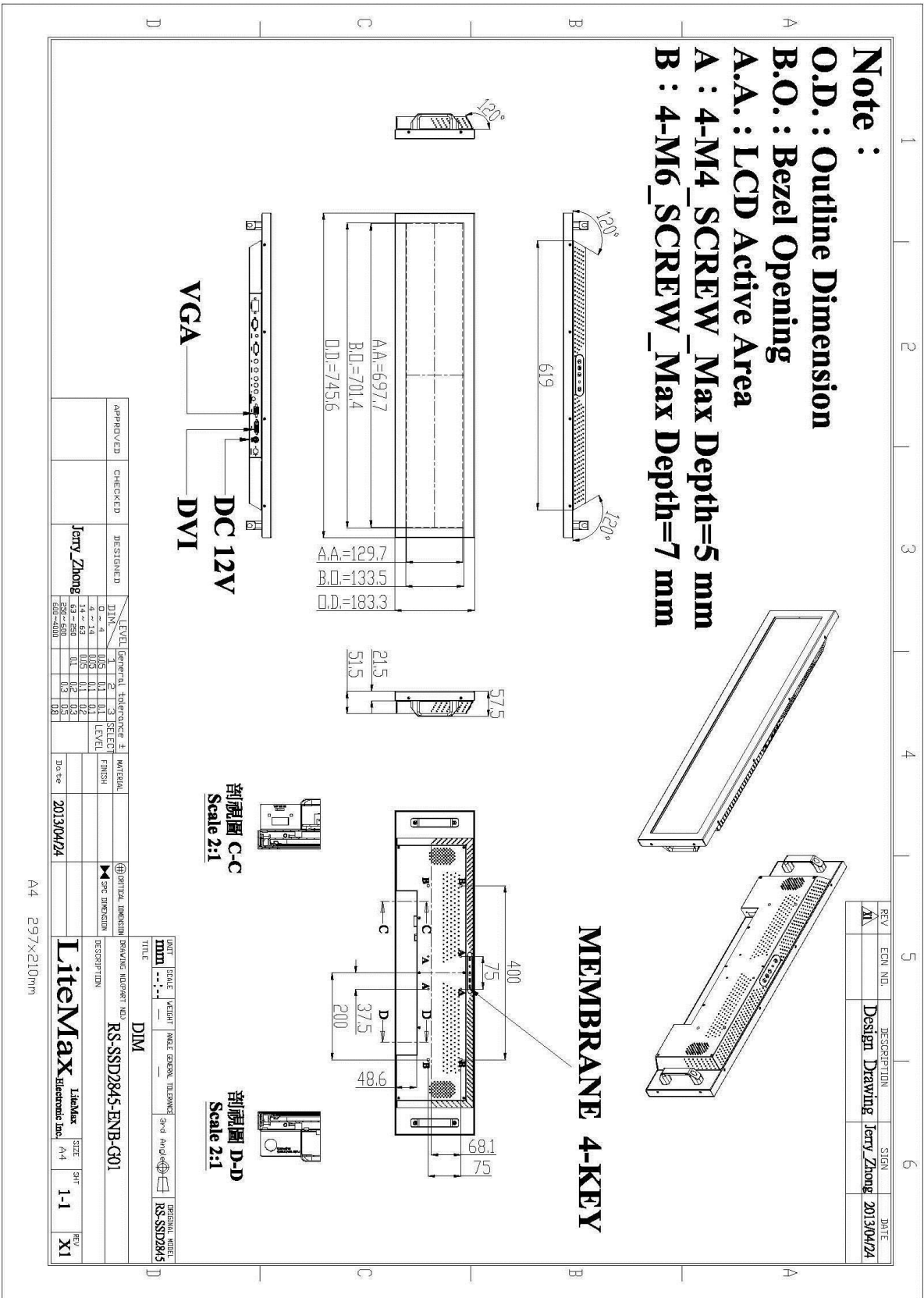
## SSD Panel+ LED Driving Board + Control Board



# Mechanical Drawing

## Outline Dimensions

Unit: mm





### Ordering Information

Model Name	Description
SSD2845-ENB-G21	28",1000nits,1920*357,LID28A.AD2662GD,O/B,DC 12V input.V03(2 in 1)

### Optional Accessories

Part Number	Description
840612051210 (Optional)	ADAPTER,AC/DC,12V/5.4A,65W,Atech OEM A065112-TDx.4P SLIDING CAP,P
810618301010 (Optional)	CABLE.POWER.AC.1830mm.(US Type).3PIN PLUG TO SOCKET.SVT(SPT-2 )18AWG 3C BLACK,P
810618301090 (Optional)	CABLE,POWER,AC,1830mm.(EU Type) 3PIN PLUG TO.SOCKET,H05VV-F 3G.0.75MMSQ BLACK,P
810618301050 (Optional)	CABLE,POWER,AC,1830mm.UK(FUSE) 3PIN PLUG TO.SOCKET,H05VV-F 3C(3G) 0.75MMSQ BLACK,P
810618301170 (Optional)	CABLE.POWER,AC,1830mm. (AU Type) 3PIN PLUG TO 2P SOCKET.LTSA 0.75MMSQ BLACK,P
810618301030 (Optional)	CABLE.POWER.AC.1830mm.(JP Type).2PIN PLUG Y TERMINAL TO. SOCKET.VCTF 3C 0.75MMSQ BLACK,P