



OUR GLOBAL  
COMPETENCE  
CENTRES

 APOLLO DISPLAY  
TECHNOLOGIES



 DISTEC



 DISPLAY  
TECHNOLOGY



# Preliminary Datasheet

## Distec

**POS-IQ-121-01-PRO**

**12.1" Monitor with IB811F-420**

MO-06-106

Version 0.5

12.08.2020

---

## Table of Contents

1	Revision History .....	4
2	Description .....	5
3	Characteristics .....	6
3.1	Interfaces .....	6
4	Mechanical Drawing .....	7
5	Optional Accessories .....	8
5.1	Mounting Frame .....	8
5.1.1	Mounting instruction .....	9
6	Software for the POS-RP-PRO Series .....	10

Preliminary

## 1 Revision History

Date	Rev.No.	Description	Page
10.12.2019	0.1	Preliminary Version	All
18.03.2020	0.2	Corrected internal No. from "MO-06-006" to "MO-06-106"	2
23.03.2020	0.3	Corrected resolution from "1280 x 3 x 800" to "1280 x 800"	6
16.07.2020	0.4	Replaced Mitsubishi (EOL) with AUO display, updated specs	6
12.08.2020	0.5	Nominal Input Voltage changed from 12 to <b>9-36V</b>	6

Preliminary

## 2 Description

Distec's 12.1" POS-IQ-121-01-PRO is a CE certified monitor solution, featuring the iBASE IB811F-420 embedded PC. Therefore it is the perfect platform for high performance visualization projects. Its robust but slim cover with IP65 proof front offers all options for integration in various applications. Our 12.1" POS-IQ-121-01-PRO with an industrial high-quality display is designed for long term availability and includes a 10 finger PCAP touchscreen. The integrated passive cooling allows for operating the system under full load even at high ambient temperatures. VESA Mounting holes allow for using it as an HMI mounted on a swivel arm or monitor stand.

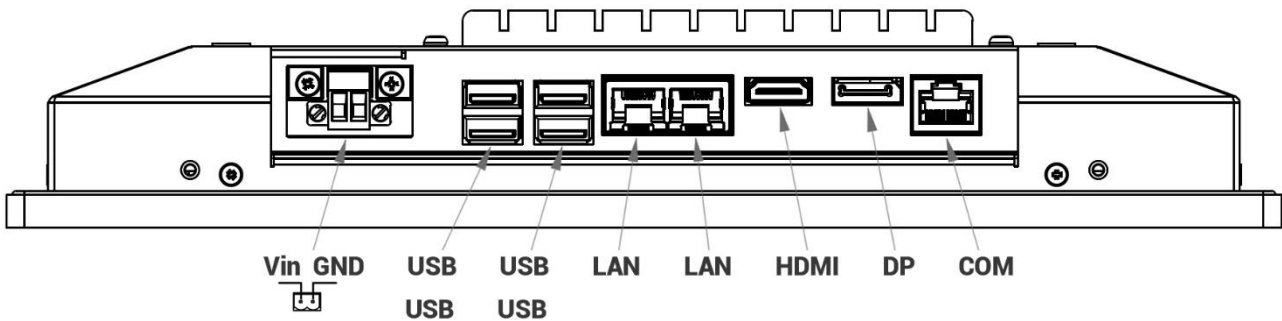
An optional in-wall mounting frame offers a variety of integrations in concrete, wooden or drywall constructions.

The integrated 64bit x86 PC with Intel® Pentium® N4200 processor features dual Gigabit Ethernet, 4 x USB 3.0, HDMI, DisplayPort and RS-232/422/485 interfaces as well as 4GB highspeed RAM and an industrial grade SSD with 64GB memory.

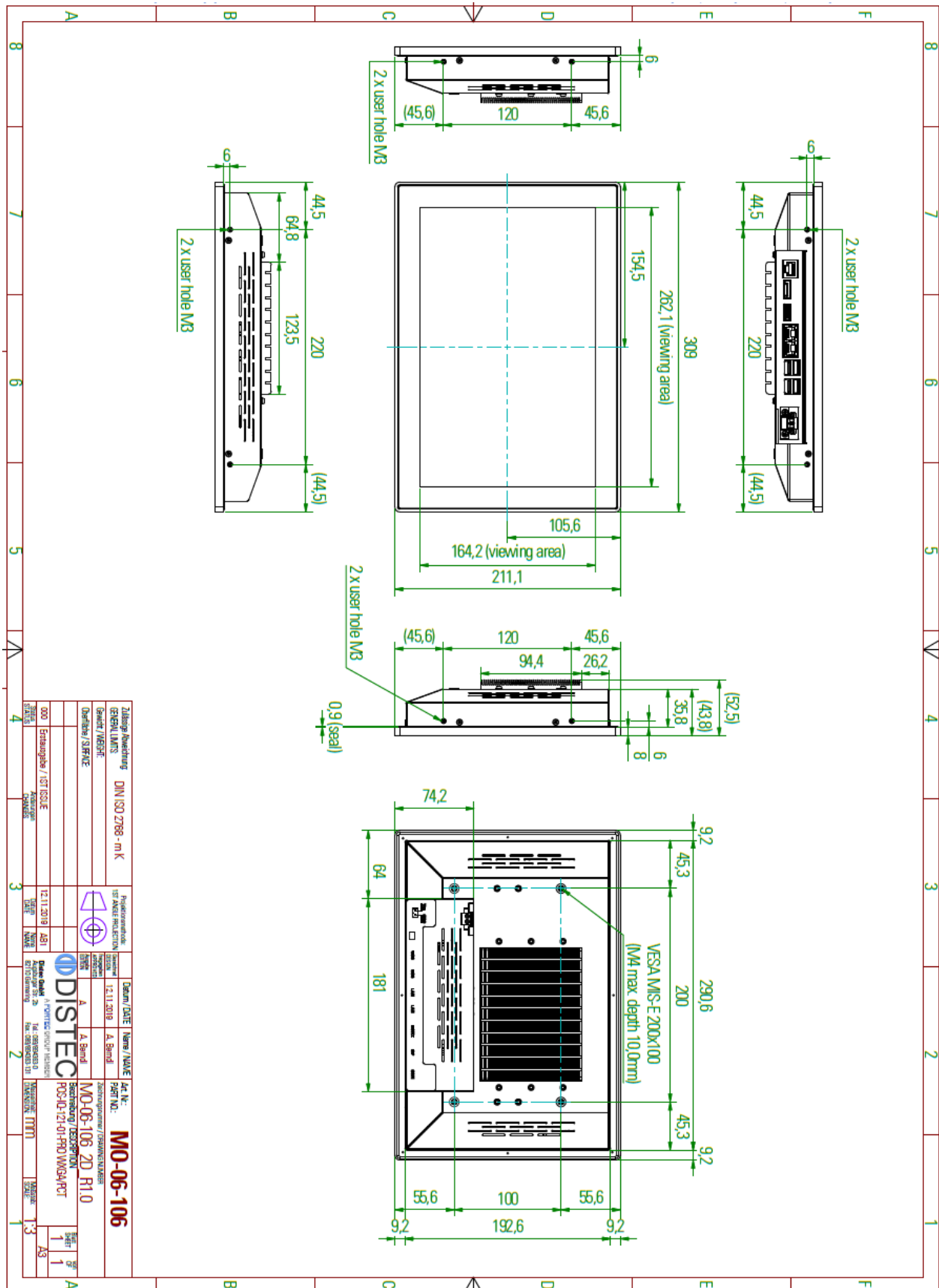
### 3 Characteristics

Items	Unit	Specification
Type		AUO
Screen Diagonal	[inch]	12.1
Physical Size H x V x D	[mm]	278 x 184 x 9.4
Active Area H x V	[mm]	261.12 (V) x 163.2 (H)
Pixels H x V		1280 x 800
Supported Colors		262k(6bit/color) / 16.2M(8bit/color)
Brightness	[cd/m <sup>2</sup> ]	800
Viewing Angle	v/h	89/89/89/89
Nominal Input Voltage	[V]	9-36
Typical Power Consumption	[W]	8.8
Weight	[kg]	2.7
Electrical Interface		LVDS
PCAP Touchscreen Touchpoints	Pcs.	10
Storage Temperature	[°C]	t.b.a.
Operating Temperature Range	[°C]	t.b.a.
IP rating		Front IP65

#### 3.1 Interfaces

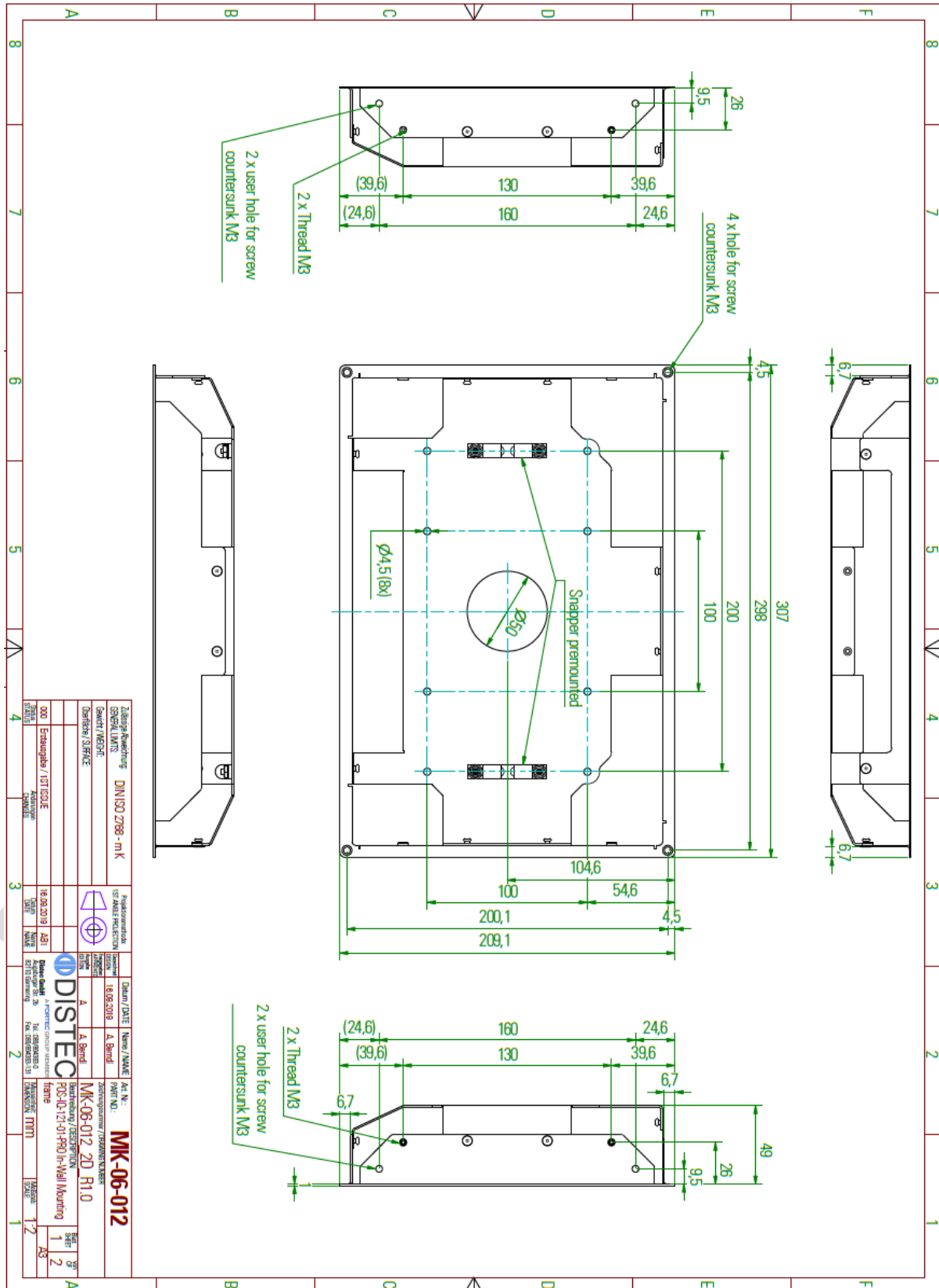


## 4 Mechanical Drawing



## 5 Optional Accessories

### 5.1 Mounting Frame





## 5.1.1 Mounting instruction

**The enclosed snappers must be pre-assembled on the basic unit**

**Mounting dry wall/cement**

**Mounting on plate (frontmount)**

**rigid mounting option (no snap solution) use of distance bolts M4x12 and screws M4 (Only accessible for installation of the device from behind)**

**Additional mounting options via side holes and threads**

**Additional mounting options via side holes and threads**

**mounting holes**

**mounting holes**

**cutout depth 49,0mm**

**Dimensions:** 295,6, 197,6, 298, 12, R8, 200,1

Zeilige Anweisung		DIN ISO 2798 - m K		Produktionscode		Datum / DATE		Name / NAME		Art. N.	
GERÄT / DEVICE		18.09.2019		18.09.2019		A Brand		A Brand		PART NO.	
Geräte / SURFACE		18.09.2019		18.09.2019		A Brand		A Brand		X00 MK-06-012 2D R1.0	
001 Erdungstafel / 151 TISSUE		18.09.2019		18.09.2019		A Brand		A Brand		X00 MK-06-012 2D R1.0	
STATUS		NAME		NAME		NAME		NAME		NAME	
1		2		3		4		5		6	
A		B		C		D		E		F	

**DISTEC**  
A FORTTEC-Produkt für Fortteck  
Siedelstraße 10  
D-52525 Heimbach  
Tel. 02699283-0  
Fax 02699283-37  
E-Mail: info@forttec.de  
www.forttec.de

**Mounting frame**

**STATUS**

**NAME**

**DATE**

**NAME**

**DATE**

**NAME**

**DATE**

**NAME**

**DATE**

**NAME**

**DATE**

**6 Software for the POS-RP-PRO Series**

Linux	Windows 10 64-bit	Windows 10 IoT 64-bit
✓	✓	✓

Preliminary

Our company network supports you worldwide with offices in Germany, Austria, Switzerland, the UK and the USA. For more information please contact:

## Headquarters

### Germany



#### FORTEC Elektronik AG

Augsburger Str. 2b  
82110 Germering

Phone: +49 89 894363-0  
E-Mail: [sales@fortecag.de](mailto:sales@fortecag.de)  
Internet: [www.fortecag.de](http://www.fortecag.de)

## Fortec Group Members

### Austria



#### FORTEC Elektronik AG

##### Office Vienna

Nuschinggasse 12  
1230 Wien

Phone: +43 1 8673492-0  
E-Mail: [office@fortec.at](mailto:office@fortec.at)  
Internet: [www.fortec.at](http://www.fortec.at)

### Germany



#### Distec GmbH

Augsburger Str. 2b  
82110 Germering

Phone: +49 89 894363-0  
E-Mail: [info@distec.de](mailto:info@distec.de)  
Internet: [www.distec.de](http://www.distec.de)



#### FORTEC Elektronik AG

Lechwiesenstraße 9  
86899 Landsberg am Lech

Phone: +49 8191 91172-0  
E-Mail: [sales@fortecag.de](mailto:sales@fortecag.de)  
Internet: [www.fortecag.de](http://www.fortecag.de)

### Switzerland



#### ALTRAC AG

Bahnhofstraße 3  
5436 Würenlos

Phone: +41 44 7446111  
E-Mail: [info@altrac.ch](mailto:info@altrac.ch)  
Internet: [www.altrac.ch](http://www.altrac.ch)

### United Kingdom



#### Display Technology Ltd.

Osprey House, 1 Osprey Court  
Hichingbrooke Business Park  
Huntingdon, Cambridgeshire, PE29 6FN

Phone: +44 1480 411600  
E-Mail: [info@displaytechnology.co.uk](mailto:info@displaytechnology.co.uk)  
Internet: [www.displaytechnology.co.uk](http://www.displaytechnology.co.uk)

### USA



#### Apollo Display Technologies, Corp.

87 Raynor Avenue,  
Unit 1 Ronkonkoma,  
NY 11779

Phone: +1 631 5804360  
E-Mail: [info@apolloDisplays.com](mailto:info@apolloDisplays.com)  
Internet: [www.apolloDisplays.com](http://www.apolloDisplays.com)