



OUR GLOBAL
COMPETENCE
CENTRES

 APOLLO DISPLAY
TECHNOLOGIES



 DISTEC



 DISPLAY
TECHNOLOGY



Datasheet

Distec

POS-IQ-101-01-PRO

10.1" Monitor with x86

MO-06-105



Version 1.3

13.09.2023

The information contained in this document has been carefully researched and is, to the best of our knowledge, accurate. However, we assume no liability for any product failures or damages, immediate or consequential, resulting from the use of the information provided herein. Our products are not intended for use in systems in which failures of product could result in personal injury. All trademarks mentioned herein are property of their respective owners. All specifications are subject to change without notice.

Table of Contents

1	Revision History	4
2	Description	5
3	Characteristics	6
3.1	Interfaces	6
4	Mechanical Drawing	7
5	Optional Accessories	8
5.1	Overview	8
5.2	Mounting Frame	9
5.2.1	Mounting instruction	9

1 Revision History

Date	Rev.No.	Description	Page
10.12.2019	0.1	Preliminary Version	All
23.03.2020	0.2	Deleted preliminary picture	2
08.07.2020	0.3	> Storage temperature changed from -10°C - +60°C to 0°C - +60°C > Operating temperature changed from 0°C - +50°C to 0°C - +60°C > updated last page	6, 11
12.08.2020	0.4	Nominal Input Voltage changed from 12 to 9-36V	6
16.11.2020	0.5	> Operating temperature changed from 0°C - +50°C to 0°C - +60°C , > Storage temperature changed from -10°C - 60°C to 0°C - +60°C	6
14.01.2021	0.6	Revised description, order of characteristics and new cover/last page	5, 6
16.07.2021	1.0	Release Version ; Software Flyer added	5
27.07.2021	1.1	New template	all
08.09.2021	1.2	Optional Accessories: Overview	8
13.09.2023	1.3	12-24V	5-6

2 Description

Distec's 10.1" POS-IQ-101-01-PRO is a CE certified/IP65 proof front monitor solution, powered with an integrated State-of-the-Art embedded PC. Therefore, it is the perfect platform for high-performance visualization projects.

Its robust but slim cover offers all options for integration and various applications. The POS-IQ-101-01-PRO is equipped with an industrial high-brightness display and is designed for long term availability.

The POS-IQ Series features:

- an integrated 5 finger PCAP touchscreen
- an ambient light sensor for automatic brightness adjustment to ambient light conditions
- integrated passive cooling, which allows operating the system under full load even at high ambient temperatures
- VESA Mounting holes for using it as an HMI, mounted on a swivel arm or monitor stand
- As Option: in-wall mounting frame for a variety of integrations in concrete, wooden, or drywall constructions

The integrated IPC offers all advantages of a modern 64bit x86 PC:

- High performance for a passive system due to an Intel® Pentium® N4200 processor
- Dual Gigabit Ethernet, 4 x USB 3.0
- HDMI 1.4b, DisplayPort 1.2 and RS-232/422/485 interfaces
- 4GB highspeed RAM and an industrial grade SSD with 64GB memory
- driven by single 12V-24V power supply
- *As Option:* Wireless - or Bluetooth adapters to be connected via LAN or USB

Available Software:

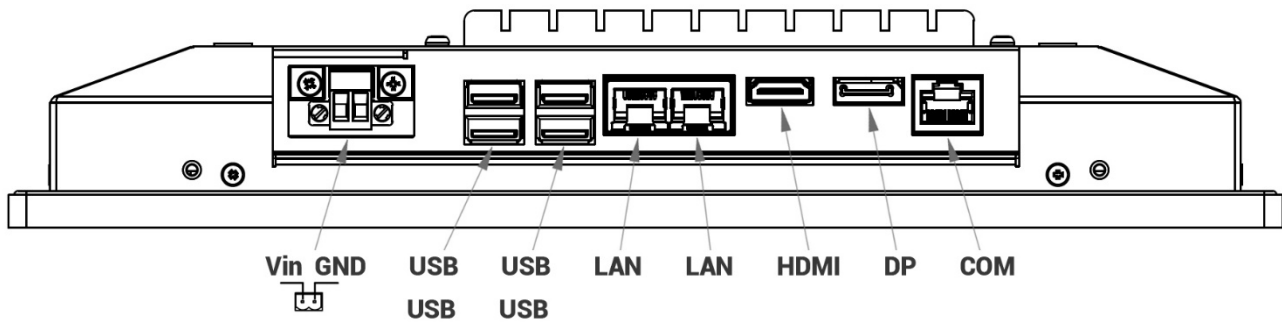
The POS-IQ-PRO series is shipped with Windows 10 embedded off the shelf. Of course the device can be used with different operation systems and various application software can be installed.

More details regarding available application software and operating systems can be found in the [flyer](#).

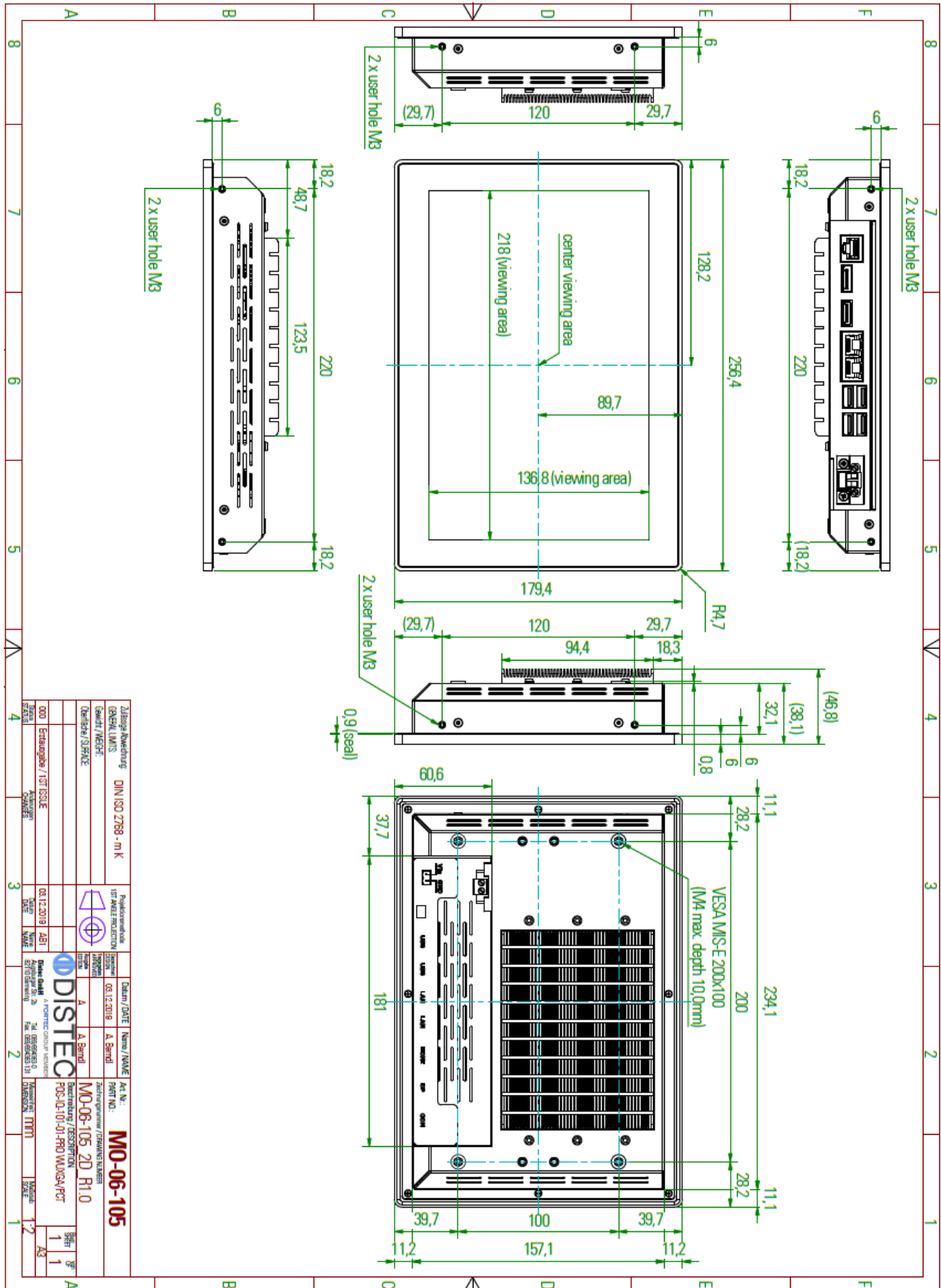
3 Characteristics

Items	Unit	Specification
Screen Diagonal	[inch]	10,1
Pixels H x V		1920 x 1200
Supported Colors		16.7M color (RGB 6bit + Hi-FRC)
Brightness	[cd/m ²]	380
Viewing Angle	v/h	89/89/89/89
Nominal Input Voltage	[V]	12-24
Typical Power Consumption	[W]	16.9
Memory	GB	4
SSD	GB	64
Electrical Interface		2 x Gbit LAN, 4 x USB 3.0, HDMI, DisplayPort, 1 x RS-232/422/485
PCAP Touchscreen Touchpoints	finger	5
Storage Temperature	[°C]	0 to +60
Operating Temperature Range	[°C]	0 to +60
IP rating		Front IP65
Physical Size H x V x D	[mm]	256.4 x 179.4 x 46.8
Active Area H x V	[mm]	216.81 x 135.5
Weight	[kg]	

3.1 Interfaces



4 Mechanical Drawing

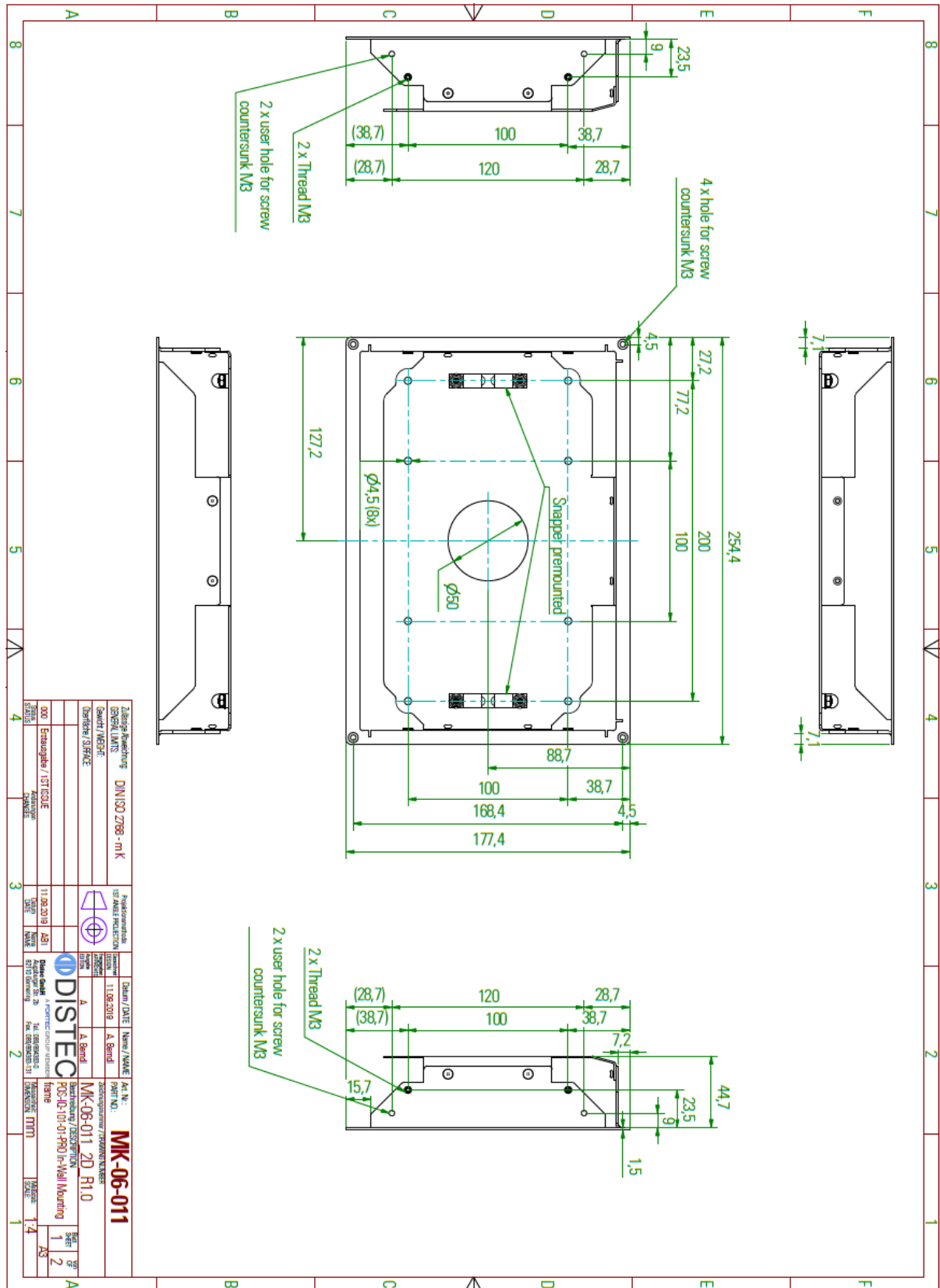


5 Optional Accessories

5.1 Overview

Mounting		
In-Wall Mounting Frame	MK-06-011	POS-IQ-101-01-PRO In-Wall mounting Frame
Power Supply Unit		
PSU 12V/5A	NT-01-062	AC Adapter CWT KPL-060F-VI(C14/12V5A)2,1
Power Cord EU	DB-07-225	IEC PowerCord (EU-C13) 3x0,75 black 1,8m
Power Cord UK	DB-07-226	Power Cord (UK - C13) black 1,8m
Power Cord USA	DB-07-238	Power Cord (US-C13) black 1,8m/6 feet
Other		
WiFi	PC-05-071	DELOCK 12462 WLAN Stick/Antenna USB 2.0

5.2 Mounting Frame



5.2.1 Mounting instruction

The enclosed snappers must be pre-assembled on the basic unit

2 x snapper mounted with Countersunk M4x6

rigid mounting option (no snap solution) use of distance bolts M4x12 and screws M4 (Only accessible for installation of the device from behind)

Mounting dry wall/cement

cutout depth 45,0mm

243,1

183,6

mounting holes

Mounting on plate (frontmount)

mounting holes

245,4

183,4

1,2

H5

243,1

183,6

Additional mounting options via side holes and threads

Additional mounting options via side holes and threads

Standard Parting	DIN ISO 2768 - m K	Product Group	1st Angle Projection	Drawn / DATE	New / NAME	Part No.	MK-06-011
General Limits		Special Limits		11.09.2018	A. Brand		
Customer / Service		Customer / Service					
Customer / 1st Issue		Customer / 1st Issue		11.09.2018	ASB		
Customer / 2nd Issue		Customer / 2nd Issue					
Customer / 3rd Issue		Customer / 3rd Issue					
Customer / 4th Issue		Customer / 4th Issue					
Customer / 5th Issue		Customer / 5th Issue					
Customer / 6th Issue		Customer / 6th Issue					
Customer / 7th Issue		Customer / 7th Issue					
Customer / 8th Issue		Customer / 8th Issue					
Customer / 9th Issue		Customer / 9th Issue					
Customer / 10th Issue		Customer / 10th Issue					
Customer / 11th Issue		Customer / 11th Issue					
Customer / 12th Issue		Customer / 12th Issue					
Customer / 13th Issue		Customer / 13th Issue					
Customer / 14th Issue		Customer / 14th Issue					
Customer / 15th Issue		Customer / 15th Issue					
Customer / 16th Issue		Customer / 16th Issue					
Customer / 17th Issue		Customer / 17th Issue					
Customer / 18th Issue		Customer / 18th Issue					
Customer / 19th Issue		Customer / 19th Issue					
Customer / 20th Issue		Customer / 20th Issue					
Customer / 21st Issue		Customer / 21st Issue					
Customer / 22nd Issue		Customer / 22nd Issue					
Customer / 23rd Issue		Customer / 23rd Issue					
Customer / 24th Issue		Customer / 24th Issue					
Customer / 25th Issue		Customer / 25th Issue					
Customer / 26th Issue		Customer / 26th Issue					
Customer / 27th Issue		Customer / 27th Issue					
Customer / 28th Issue		Customer / 28th Issue					
Customer / 29th Issue		Customer / 29th Issue					
Customer / 30th Issue		Customer / 30th Issue					
Customer / 31st Issue		Customer / 31st Issue					
Customer / 32nd Issue		Customer / 32nd Issue					
Customer / 33rd Issue		Customer / 33rd Issue					
Customer / 34th Issue		Customer / 34th Issue					
Customer / 35th Issue		Customer / 35th Issue					
Customer / 36th Issue		Customer / 36th Issue					
Customer / 37th Issue		Customer / 37th Issue					
Customer / 38th Issue		Customer / 38th Issue					
Customer / 39th Issue		Customer / 39th Issue					
Customer / 40th Issue		Customer / 40th Issue					
Customer / 41st Issue		Customer / 41st Issue					
Customer / 42nd Issue		Customer / 42nd Issue					
Customer / 43rd Issue		Customer / 43rd Issue					
Customer / 44th Issue		Customer / 44th Issue					
Customer / 45th Issue		Customer / 45th Issue					
Customer / 46th Issue		Customer / 46th Issue					
Customer / 47th Issue		Customer / 47th Issue					
Customer / 48th Issue		Customer / 48th Issue					
Customer / 49th Issue		Customer / 49th Issue					
Customer / 50th Issue		Customer / 50th Issue					

Our company network supports you worldwide with offices in Germany, Austria, Switzerland, the UK and the USA. For more information please contact:

Headquarters

Germany



FORTEC Elektronik AG

Augsburger Str. 2b
82110 Germering

Phone: +49 89 894450-0
E-Mail: info@fortecag.de
Internet: www.fortecag.de

Fortec Group Members

Austria



Distec GmbH Office Vienna

Nuschingasse 12
1230 Wien

Phone: +43 1 8673492-0
E-Mail: info@distec.de
Internet: www.distec.de

Germany



Distec GmbH

Augsburger Str. 2b
82110 Germering

Phone: +49 89 894363-0
E-Mail: info@distec.de
Internet: www.distec.de

Switzerland



ALTRAC AG

Bahnhofstraße 3
5436 Würenlos

Phone: +41 44 7446111
E-Mail: info@altrac.ch
Internet: www.altrac.ch

United Kingdom



Display Technology Ltd.

Osprey House, 1 Osprey Court
Hinchingsbrooke Business Park
Huntingdon, Cambridgeshire, PE29 6FN

Phone: +44 1480 411600
E-Mail: info@displaytechnology.co.uk
Internet: www.displaytechnology.co.uk

USA



Apollo Display Technologies, Corp.

87 Raynor Avenue, Unit 1
Ronkonkoma, NY 11779

Phone: +1 631 5804360
E-Mail: info@apolloDisplays.com
Internet: www.apolloDisplays.com