



ZYTRONIC DATA SHEET

ZXY200™

The ZXY200™ controller is designed to support our patented medium to large format MPCT™ multi-touch sensors and is capable of detecting up to 40 simultaneous touches

ADVANTAGES

- 40 independent touch points
- Supports MPCT™ sensors sizes 22" - 46"
- Enables rapid touch detection (<10mS)
- Support for Win7, 8 & 10, as well as Linux 3.5.1+ Kernels (10 point touch) or 3.9.0+ (40 touch points)
- Detachable and completely independent of the touch sensor
- Output protocol available on request
- Range of other operating systems supported

OPERATION

The MPCT™ touch sensor is divided into an X - Y matrix of sensing cells, using an array of embedded 10µm copper electrodes, which are near invisible to the human eye on a powered display. These electrodes are connected to a controller board and a charge is applied to the array.

When a finger or conductive stylus approaches the surface of the sensor a change in the charge is detected in the nodes immediately beneath adjacent cells; the position is then determined by the controller and its firmware. Unlike conventional capacitive systems the active component of MPCT™ is embedded behind a thick substrate, ensuring protection, long life and stability.

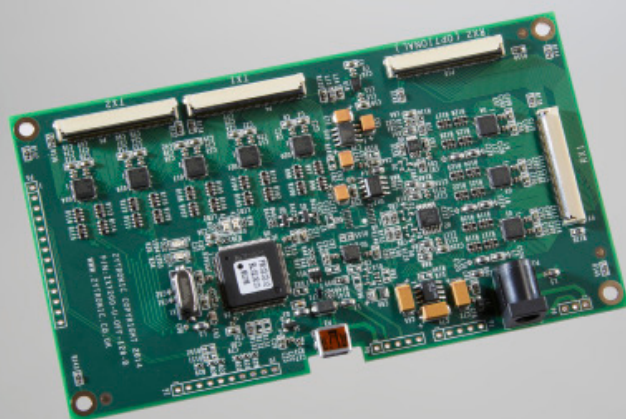
The unique sensing characteristics of MPCT™ sensing eliminates the need for an operating force, providing users with similar levels of touch sensitivity as experienced with the latest smart phones and tablet PC's, but on a much larger scale, and in any environment or location.

APPLICATIONS

Zytronic's Multi-Touch PCT™ products meet the latest requirements for multi touch and multi user interactivity, while still maintaining the high levels of durability that Zytronic's products are known for.

The controller has been designed to provide plug-and-play with the latest operating systems and application software packages such as NUI TEQ's Snowflake, Omnivision's Omnitapps and Touch Tech's LIMA.

They are the perfect choice for multi touch and multi user digital signage, leisure and touch table applications.



CONTROLLER

- Controller powered from external regulated 12v±5% d.c. supply and the USB UBUS (5v)
- 12v connection via a 2.1mm socket (central pin +12v)
- Current consumption <150mA
- Supports sensor sizes from 22" - 46"
- X - Y co-ordinate update rate ~1mS at controller, ~8mS to 12mS at host due to USB coms
- Accuracy <1mm
- Maximum recommended glass thickness 8mm
- Controller recognised as HID device in Linux 3.5.1+ kernels (10 touch points) or 3.9.0+ (40 touch points)
- Configuration tool software (ZyConfig®) is available to download from the Zytronic website to enable controller sensitivity settings to be adjusted in Windows and Linux operating systems

APPROVALS

RoHS Compliant

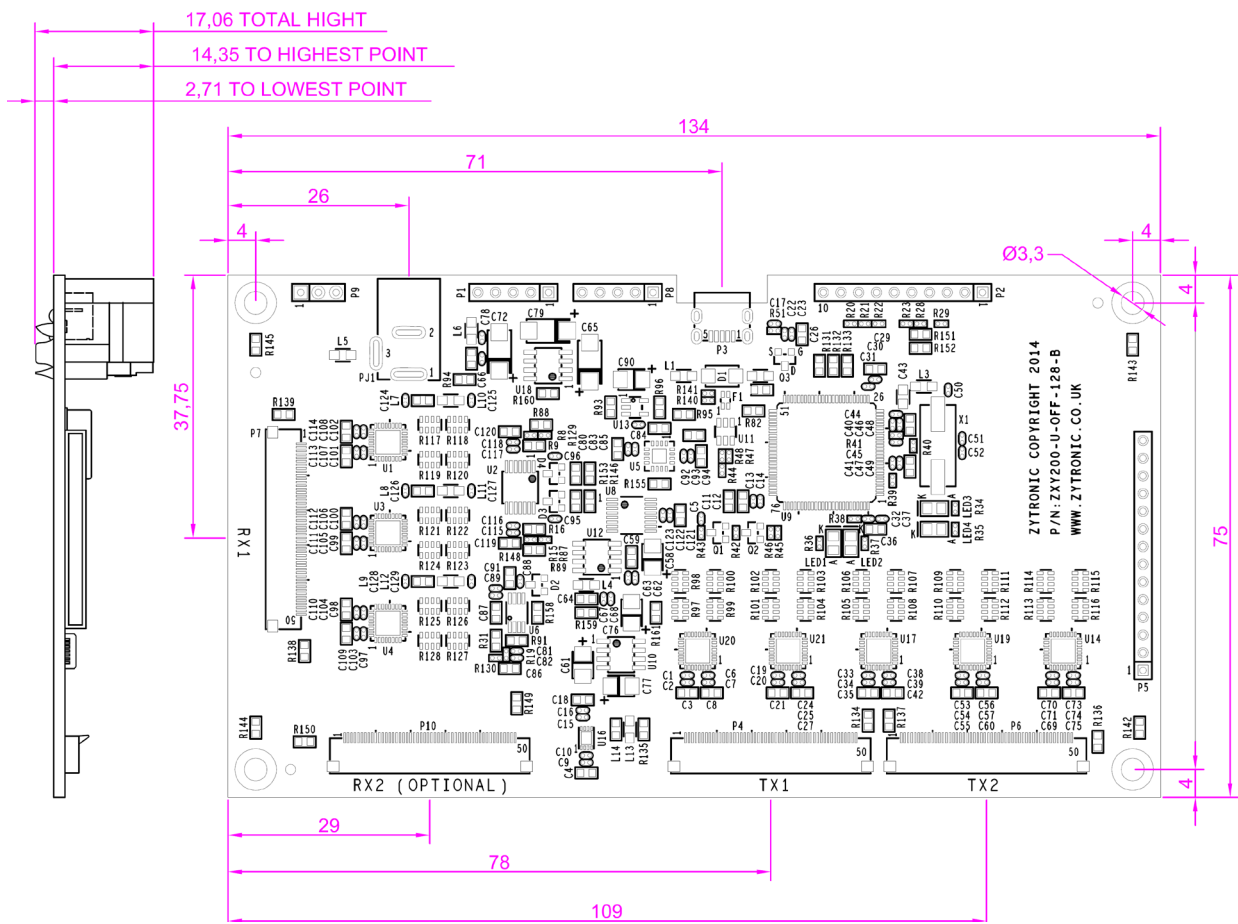
CE, FCC (Class B) & UL approved

www.zytronic.co.uk

DRAWING

USB only

Front view



ZYTRONIC and its logo are registered in the United Kingdom and other countries.



Company No: 379908. Registered in England. VAT No: GB 746 4858 88

Whiteley Road
Blaydon on Tyne
Tyne & Wear
NE21 5NJ
United Kingdom

T: +44 (0) 191 414 5511
F: +44 (0) 191 414 0545
E: info@zytronic.co.uk

www.zytronic.co.uk