

# DATA SHEET

## OSD-Board IF315-01

Product No. ZU-02-315A



Rev 1.0

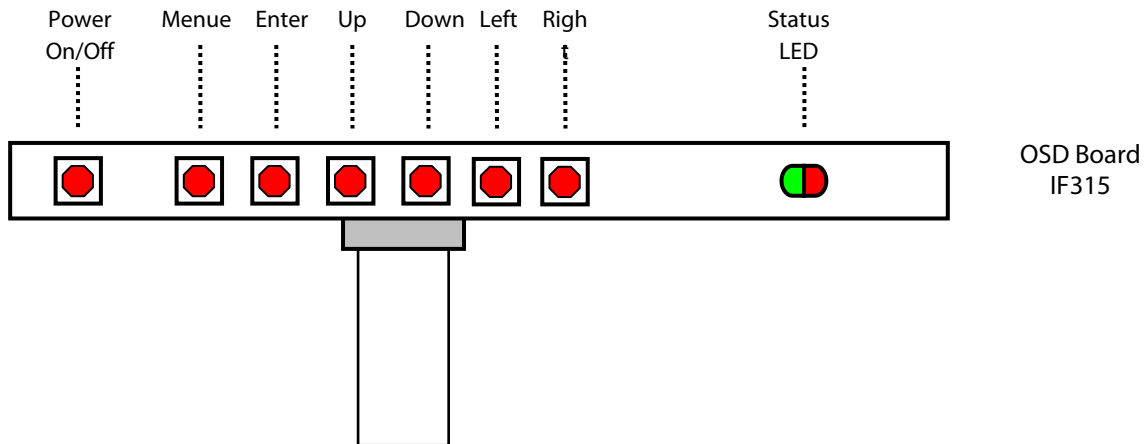
May 02, 2006

The information given in this document is carefully checked and believed to be reliable. However, Distec takes no response for any failure or product damage caused by the application of this information. Please check all connections carefully with the data sheet. Distec products are not intended for use in systems in which failures of product could result in personal injury. All mentioned trademarks are registered trademarks of their owner.

All specifications are subject to change without notification.

## 1 Description

The OSD of an RGB-converter board allows fine tuning of various functional parameters like brightness, phase etc. These parameters can be adjusted via push-buttons. Visual feedback is provided in the form of an OSM (On-Screen-Menu). The IF315 is a remote interface for controlling the various OSD features.



The 6 key-buttons can either be used to navigate within the OSM functions (see Table 1) or for direct calls of some special functions depending on the firmware of the RGB-converter board (see Table 2).

Table 1:

Key	Function	Remark
MENU	Leave OSD main menu	
	Leave submenu	
	Leave function	
ENTER	Opens selected main/PIP/OSD/factory_reset menu	
	Opens selected sub-menu	
	Enables selected operation	In selection functions
UP	Moves up through functions	In open main/PIP/OSD menu
DOWN	Enables source selection list	In main or PIP, while sub-menus are closed
	Opens selected sub-menu	
	Moves down through functions	In open main/PIP/OSD menu
LEFT	Moves left through functions	In selected sub-menu
	Decreases set value of function slider or cycles left through possible operation modes	When a function is selected
RIGHT	Moves right through functions	In selected sub-menu
	Decreases set value of function slider or cycles left through possible operation modes	When a function is selected

Table 2:

<b>Key</b>	<b>Function</b>
MENU	Opens OSD
ENTER	Cycles through inputs
LEFT	Increases brightness
RIGHT	Decreases brightness

The status LED on the external OSD board and the two LEDs on the PRISMA show the current status on the board (see Table 3).

Table 3:

<b>Colour</b>	<b>Meaning</b>
Green	Normal operation
Red	No signal Input signal not supported
None	Sleep

## 2 Connector / Pin Assignment

The pin assignment of S1 / S2 is shown in table 4

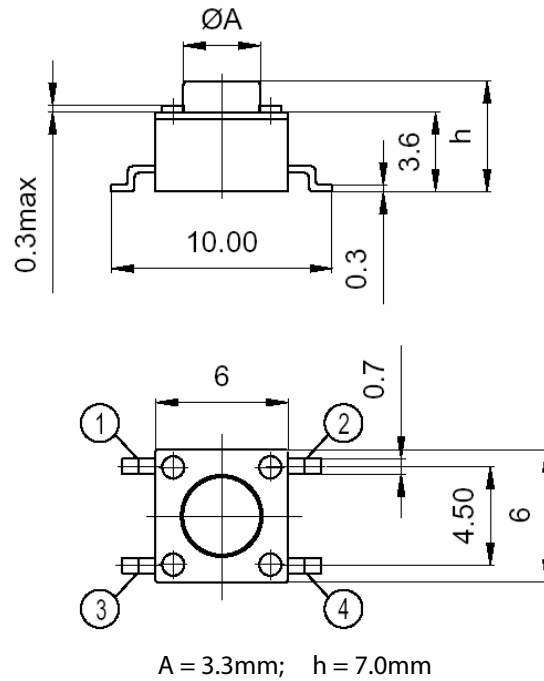
Table 4:

OSD CONTROL PANEL CONNECTOR S1 / 2		
Pin	Signal	Description
1	SW2	MENU
2	SW3	ENTER
3	SW4	UP
4	SW5	DOWN
5	SW6	LEFT
6	SW7	RIGHT
7	RVD	Reserved for future use

Pin	Signal	Description
8	RVD	Reserved for future use
9	GPIO5	Status LED red (no signal)
10	LED_GR	Status LED green (signal good)
11	SW1	System power on / off
12	+3.3V	3.3V power supply
13	+5V	5V power supply
14	GND	Ground



### 3.2 Print Mount Switches (OSD)



Our company network supports you worldwide with offices in Germany, Turkey, Great Britain and the USA. For more information please contact:



#### **Distec GmbH**

Augsburger Str. 2  
82110 Germering  
Germany  
Phone: +49 (0)89 / 89 43 63-0  
Fax: +49 (0)89 / 89 43 63-131  
E-Mail: [info@distec.de](mailto:info@distec.de)  
Internet: [www.distec.de](http://www.distec.de)



DATA DISPLAY TEKNOLOJİ

#### **Data Display Teknoloji Elektronik San Ve Diş Tic A.Ş.**

Kustepe Leylak Sok.  
Nursanlar Is Merkezi  
Kat. 6 No: 21  
Sisli / Istanbul  
Turkey  
Phone: +90 (0)212 / 356 04 20  
Fax: +90 (0)212 / 356 04 25  
E-Mail: [info@datadisplay.com.tr](mailto:info@datadisplay.com.tr)  
Internet: [www.datadisplay.com.tr](http://www.datadisplay.com.tr)



DISPLAY TECHNOLOGY

#### **Display Technology Ltd.**

A2 Spectrum Business Centre  
Anthonys Way, Medway City Estate  
Rochester, Kent, ME2 4NP  
United Kingdom  
Phone: + 44 (0)1634 / 29 55 55  
Fax: + 44 (0)1634 / 29 55 43  
E-Mail: [info@displaytechnology.co.uk](mailto:info@displaytechnology.co.uk)  
Internet: [www.displaytechnology.co.uk](http://www.displaytechnology.co.uk)



#### **Apollo Display Technologies LLC**

85 Remington Blvd.  
Ronkonkoma, NY 11779  
United States of America  
Phone: +1 631 / 580-43 60  
Fax: +1 631 / 580-43 70  
E-Mail: [info@apollodisplays.com](mailto:info@apollodisplays.com)  
Internet: [www.apollodisplays.com](http://www.apollodisplays.com)

---